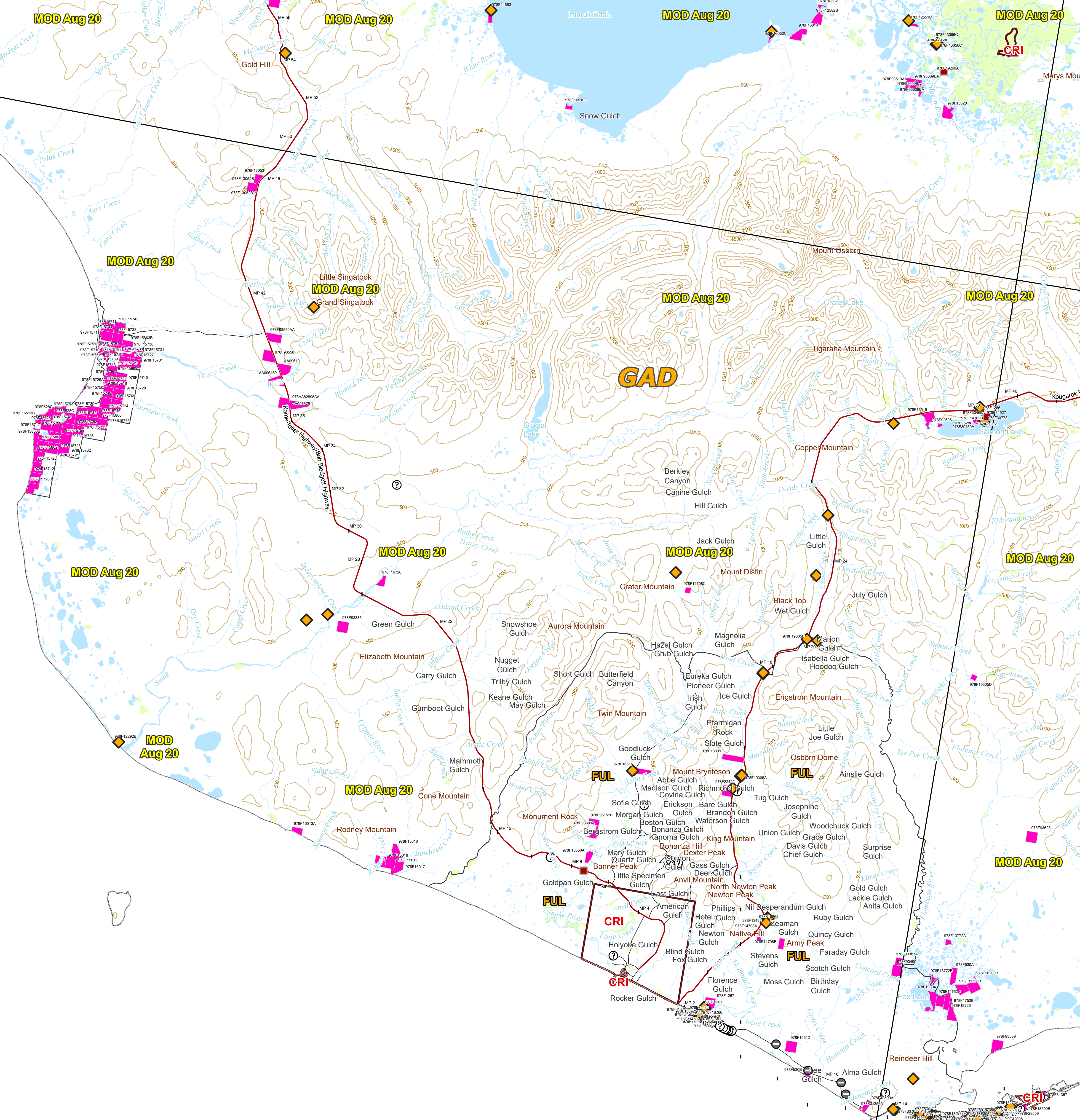


ALASKA MARITIME
NATIONAL
WILDLIFE REFUGE



Produced by Alaska Fire Service GIS Team
Map created: 4/13/2023
FOR WILDLAND FIRE PURPOSES ONLY

Disclaimer: No warranty is made by the Bureau of Land Management as to the accuracy, reliability, or completeness of these data for individual or aggregate use with other data. Original data were compiled from various sources. This information may not meet National Map Accuracy Standards. This product was developed through digital means and may be updated without notification.

The information displayed on this map should be used for graphic display only. For official land status information, refer to Cadastral Survey plats, Master Title plats, and landstatus case-files.

CONTOUR INTERVAL 100 FEET
NORTH AMERICAN VERTICAL DATUM OF 1988
MAY NOT MEET NATIONAL MAP ACCURACY STANDARDS



Values at Risk

| | | | | | |
|---|--|---|---|--|---|
| ■ Critical | ◆ Full | ○ No Protection | ◆ Avoid | ○ Undesignated | ■ Native Allotments |
|---|--|---|---|--|---|

Fire Management Options

| | |
|--|---|
| CRI = Critical | FUL = Ful, MOD = Modified, LIM = Limited, UN = Unplanned |
|--|---|